



United States Department of the Interior

BUREAU OF LAND MANAGEMENT
CALIFORNIA STATE OFFICE
2800 Cottage Way
Sacramento, California 95825

DM - Bahusfield
IN REPLY REFER TO:

1703
(CA-932)

Memorandum

To: Director (200), Room 5626, MIB
Director (500), Room 5647, MIB

From: State Director, California

Subject: Field Inspection of Atlas Superfund Site

By previous agreement we have arranged for a field review of the Atlas Asbestos Superfund Site and adjacent Clear Creek Recreation Use Area.

The schedule will consist of the following:

July 4, 1988, (Monday)

P.M. Bernie Hyde arrives. Reservations at Coral Reef, 2700 Fulton Ave., (916)-483-6461.

July 5, 1988 (Tuesday)

8:00 a.m. Buz Kennedy will pick up Bernie Hyde at the Coral Reef.

10:48 a.m. Mr. Dean Stepanek and Dave Howell arrive Sacramento. Buz Kennedy will provide transportation at Sacramento airport.

P.M. Stepanek, Hyde, Johnson, Kennedy, and Howell leave for Coalinga Airport.

Briefing at Coalinga Airport by Rheiner.

Overflight of Atlas Area.

View asbestos contamination sites in Coalinga (Santa Fe Transportation Co., Los Gatos Creek)

Lodging - Cambridge Inn Motor Lodge
Coalinga, CA
(209) 935-1541

1/ Holister R. A. to provide transportation at Coalinga Airport and needed safety equipment for field trip.

July 7, 1988 (Thursday)

8:00 - 8:30 Atlas closeout overflight - Stepanek, Hyde, Johnson,
Kennedy, Howell

8:30 - 9:30 Fly to Sacramento

1:00 L&RR Division Staff meeting with Stepanek

2:00 Closeout with State Director - Stepanek, Johnson,
Kennedy, Payne, Hyde, Rheiner, Howell, Boos, Dabia

4:30 p.m. Stepanek leaves Sacramento Metro via Delta 1436
Reservations at Coral Reef for Dave Howell and
Bernie Hyde. (2700 Fulton Ave., 916-483-6461)

July 8, 1988 (Friday)

~~6:30 a.m. Bernie Hyde, Dave Howell leave Sacramento Metro
Airport via Continental 1644~~

Attachments

cc: District Manager - Bakersfield
Area Manager - Hollister

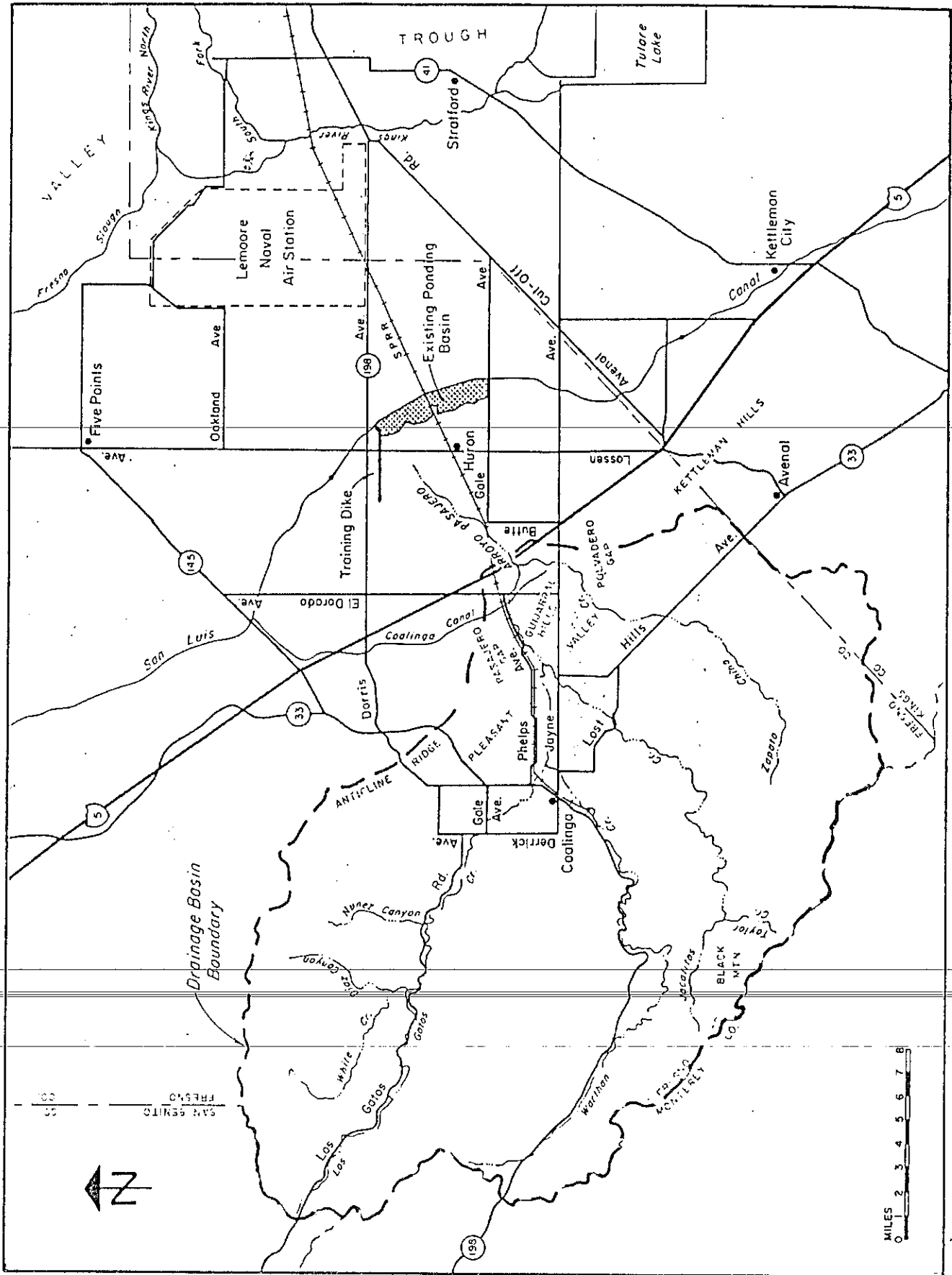
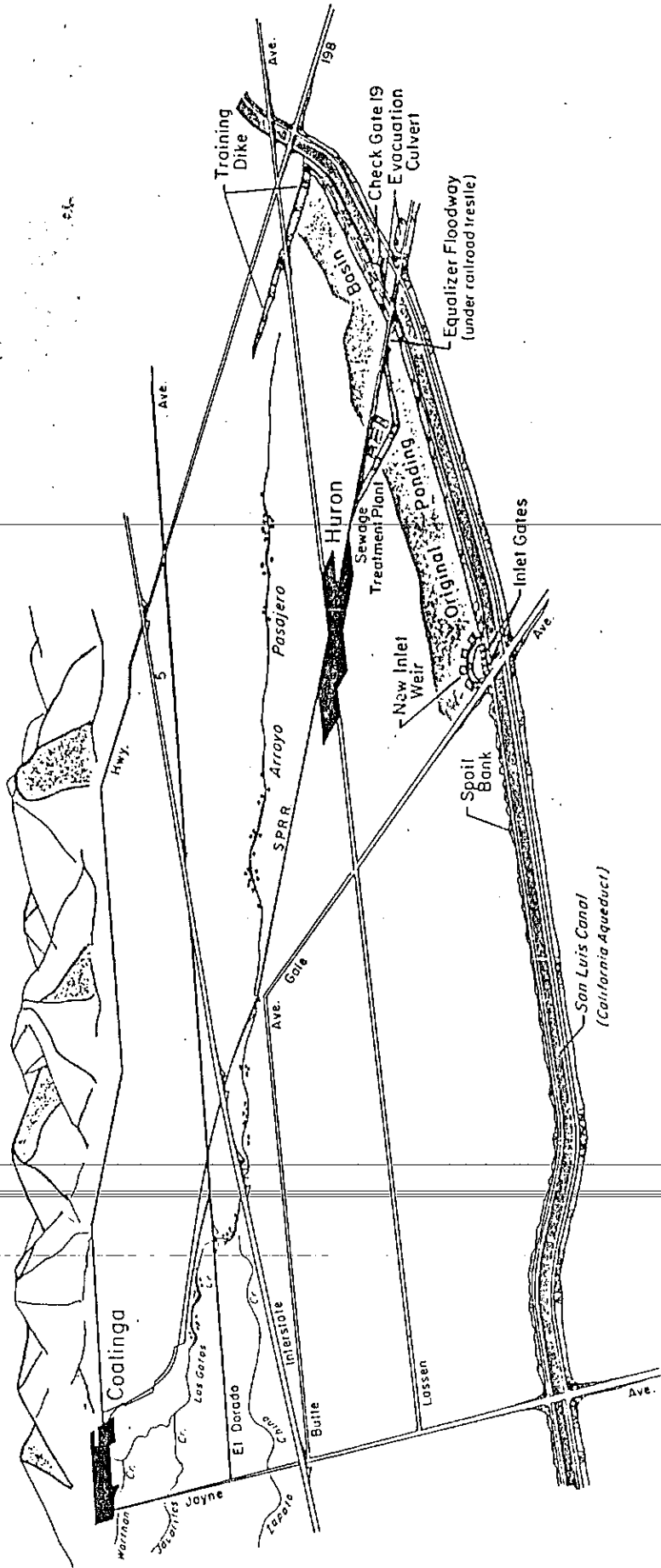
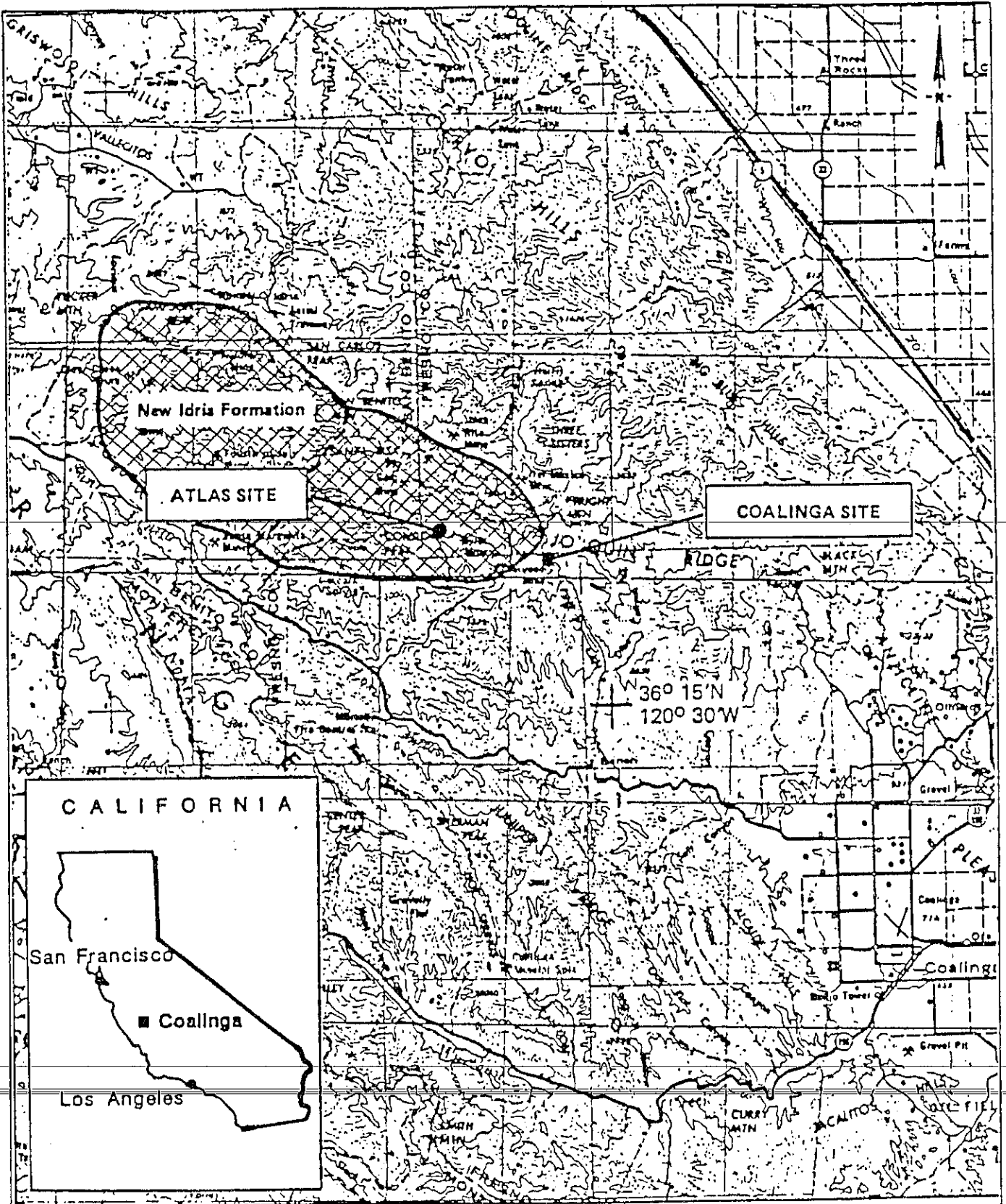


Figure 1. Arroyo Pasajero Study Area Base Map



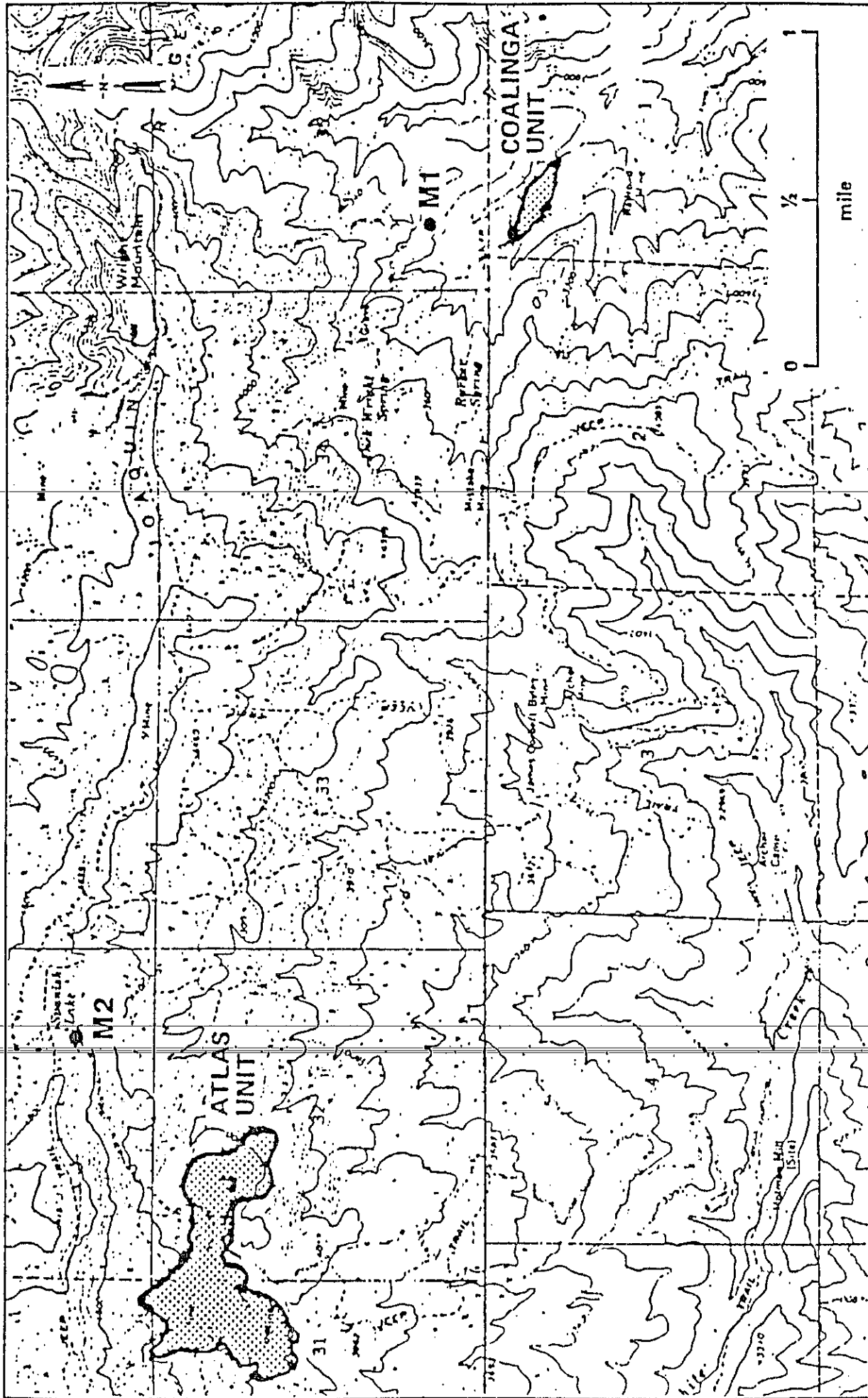
Study area rendering. This sketch (which is not drawn to scale) shows the principal features of the Arroyo Pasajero study area.



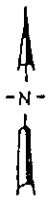
0 5 10 miles

DATEPRINT N8507

Project No. 239-RI1 239-RI2	Atlas and Coalinga Sites	PROJECT VICINITY MAP	Figure 1
	Woodward-Clyde Consultants		



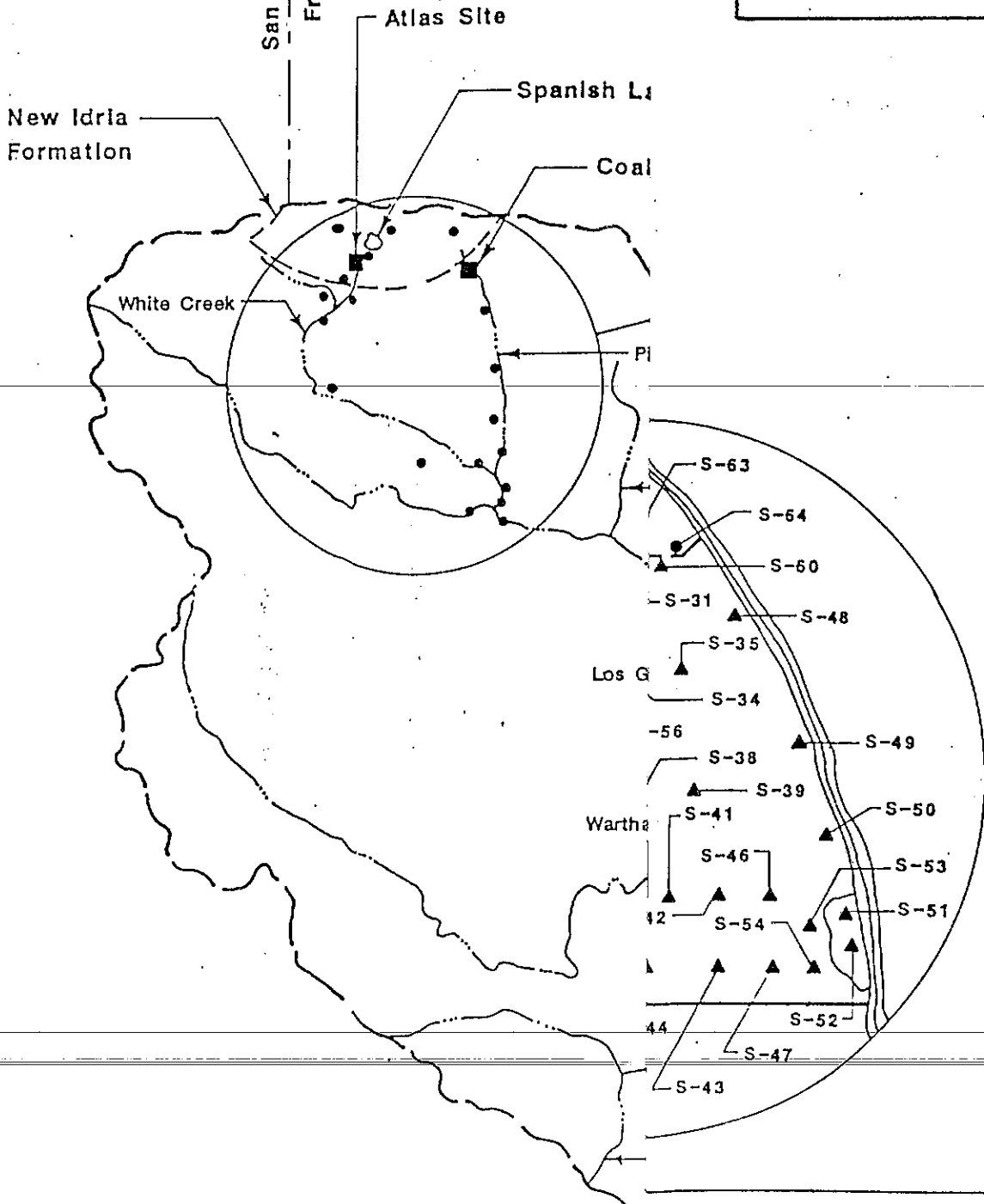
LEGEND M1, M2 - Meteorological Station Locations	Project No. 239-R11 239-R12	Atlas and Coalinga Sites Woodward-Clyde Consultants	METEOROLOGICAL MONITORING SITES	Figure 2
--	-----------------------------------	--	--	--------------------



San Benito Co.
Fresno Co.

LEGEND

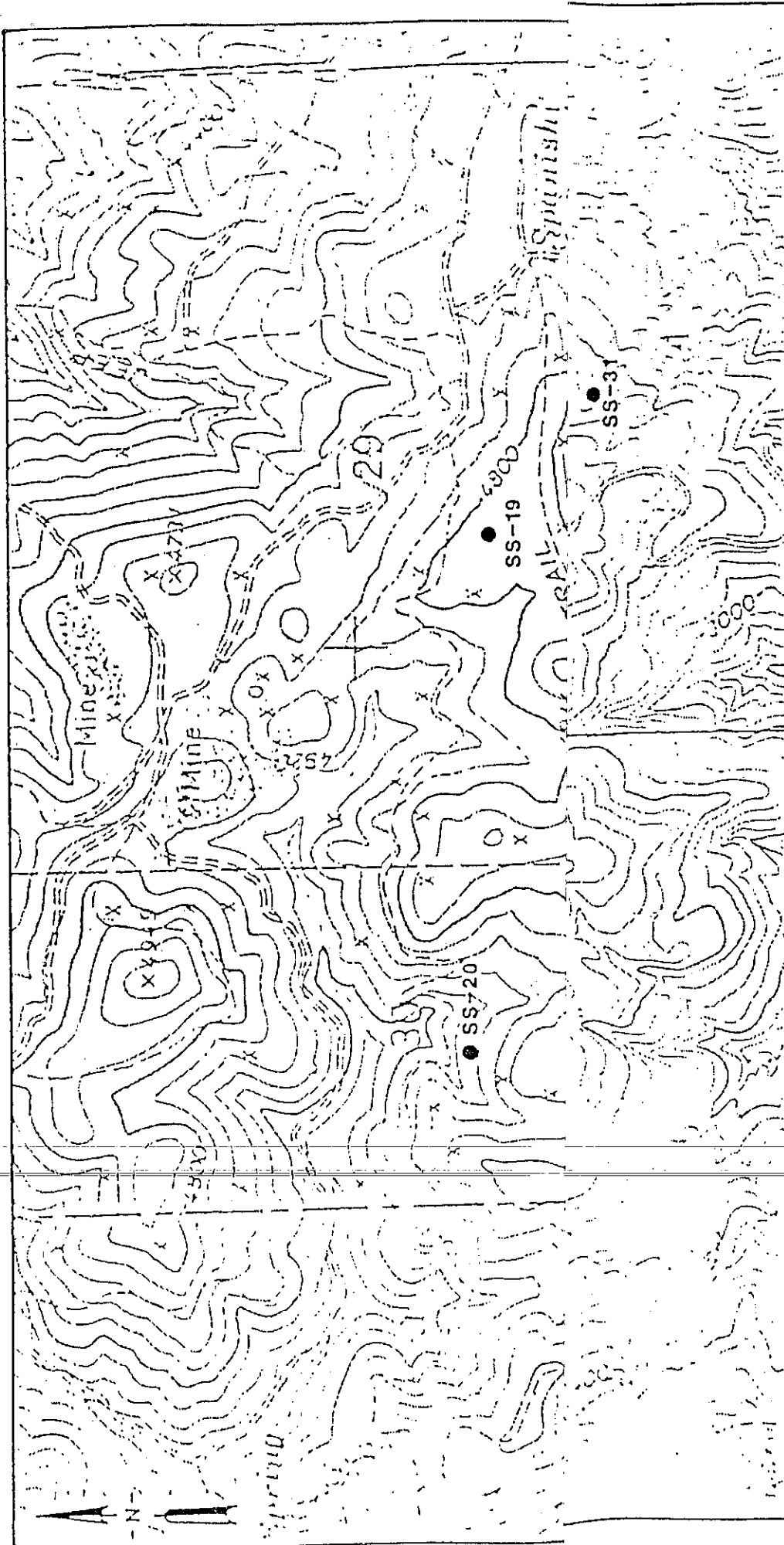
- S-2 ROAD OR STREAM BED SOIL SAMPLE
- ▲ S-33 OPEN FIELD SOIL SAMPLE



Arroyo Pasajero Drainage Basin Boundary → Atlas and Coalinga Sites

STREAM BED PROGRAM OIL SAMPLE LOCATIONS

ward-Clyde Consultants	Figure 3-1
------------------------	---------------



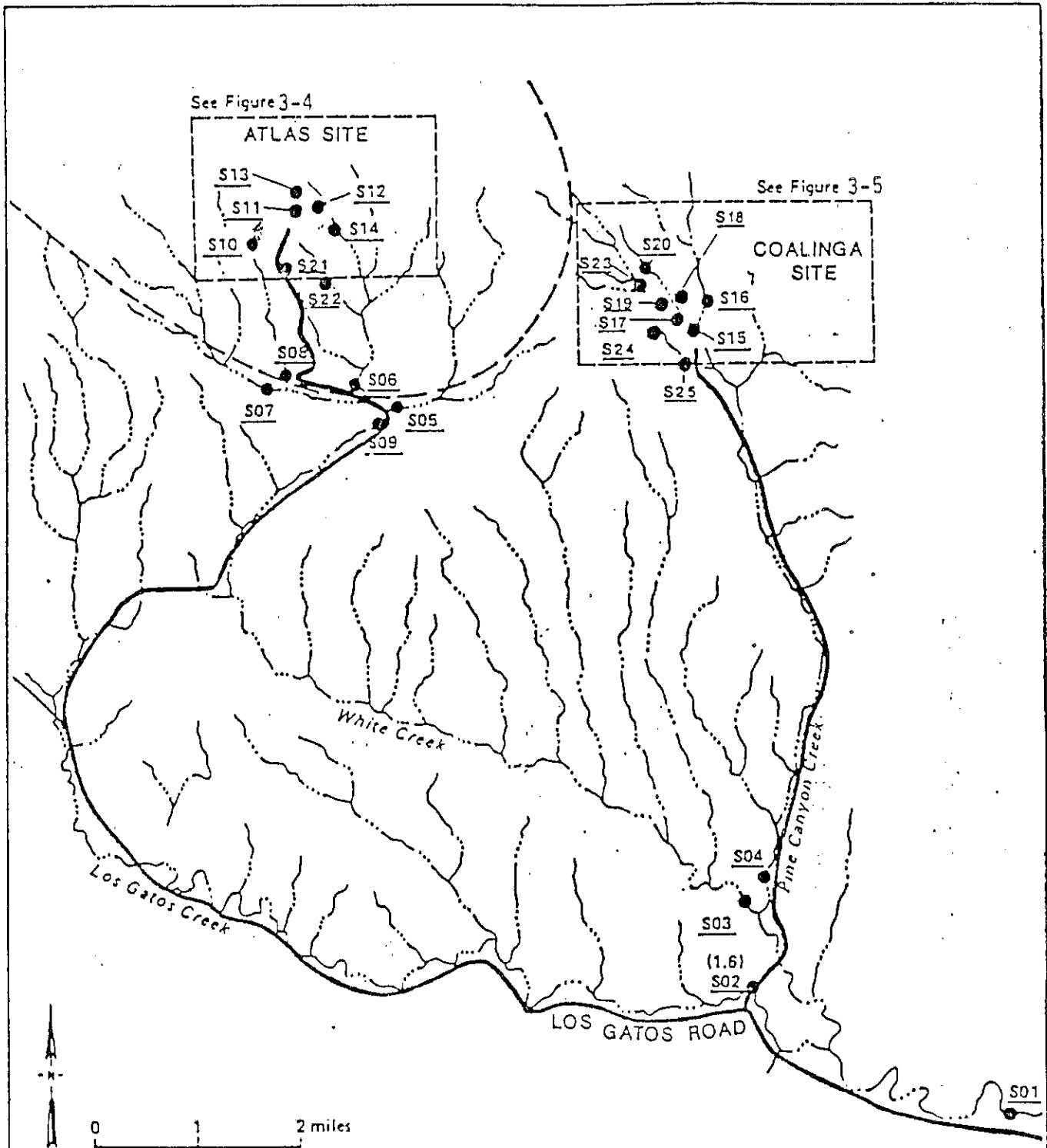
Source: USGS Topographical Quadrangle Map 7.5 Minute Series

Atlas and Coalinga Sites

UPLAND SOIL SAMPLE
LOCATIONS
ATLAS SITE AREA

Figure
3-2

Woodward-Clyde Consultants



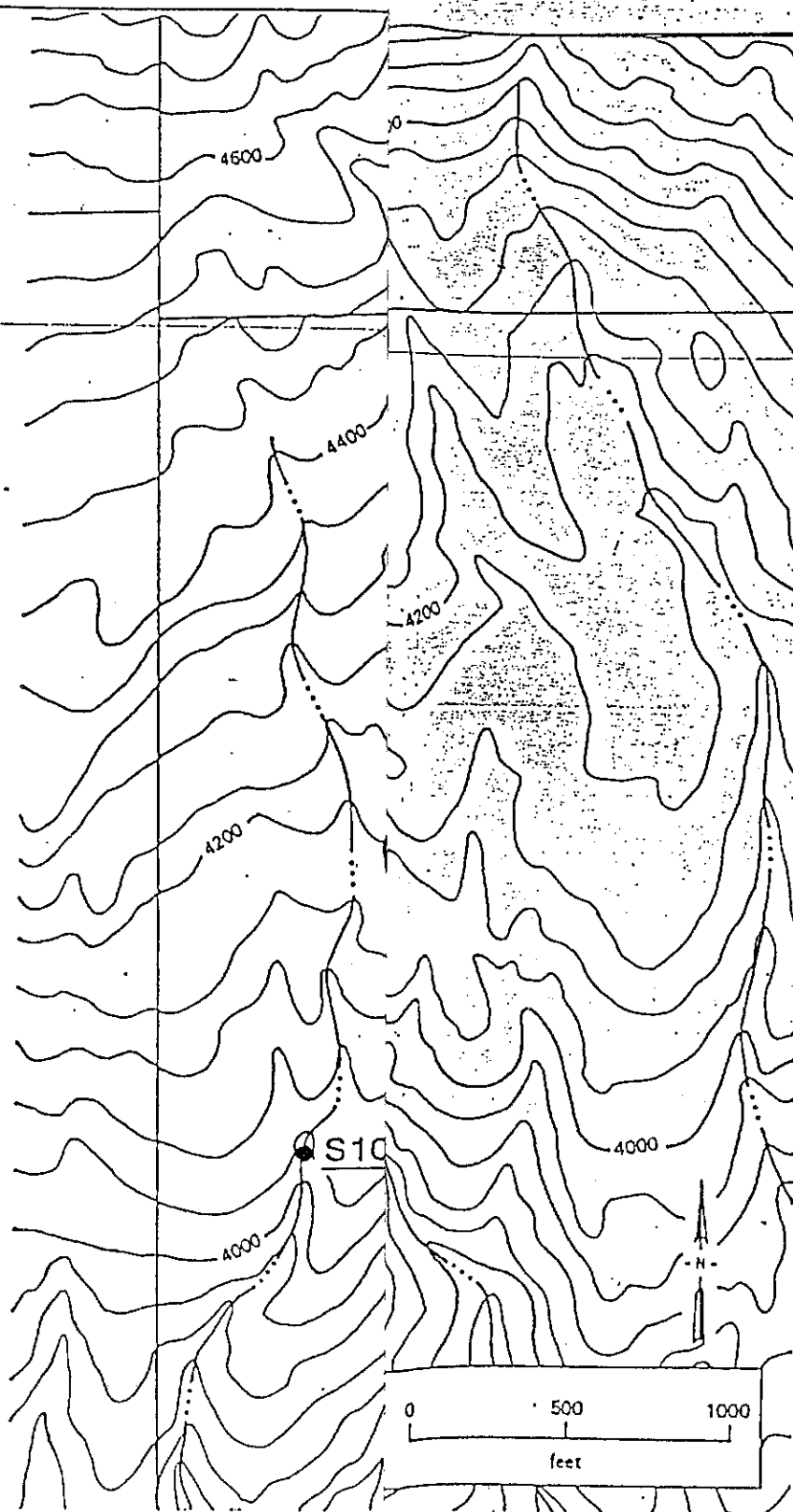
LEGEND

- S12 Water Quality Sampling Station
- - - Approximate Limits of new Idria Formation
- Access Routes to Sites

DATAPRINT N41079

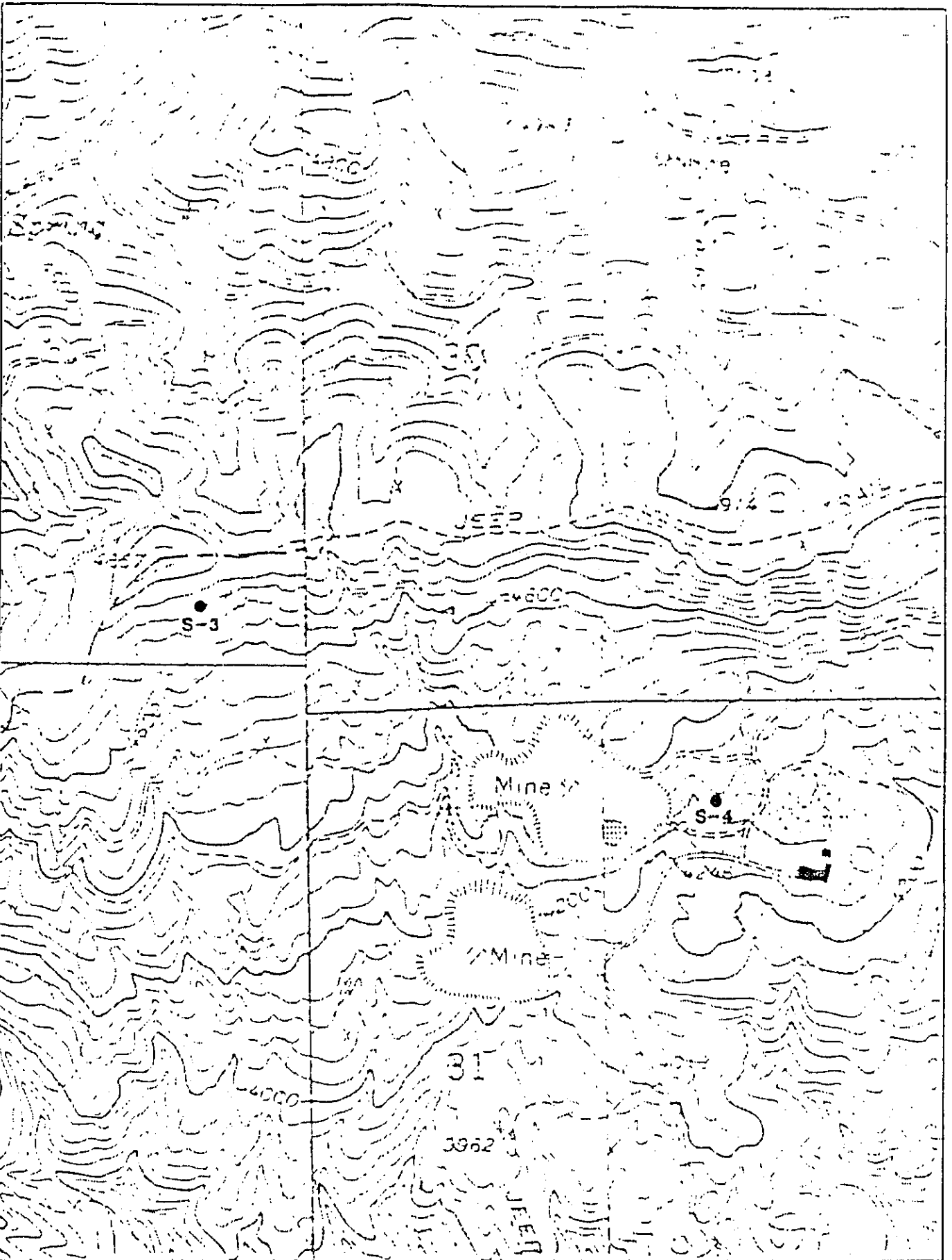
Project No. 239-R11 239-R12	Atlas and Coalinga Sites	SAMPLING STATIONS	Figure 3-3
	Woodward-Clyde Consultants		

DATA/PRINT N83971



SAMPLING STATIONS IN
THE IMMEDIATE VICINITY
OF THE ATLAS SITE

Figure
3-4



DATEPRINT

Project No. 239-RI1 -RI2	Atlas and Coalinga Sites	RAINFALL SIMULATOR PLOT LOCATIONS -ATLAS SITE	Figure 4-23
	Woodward-Clyde Consultants		